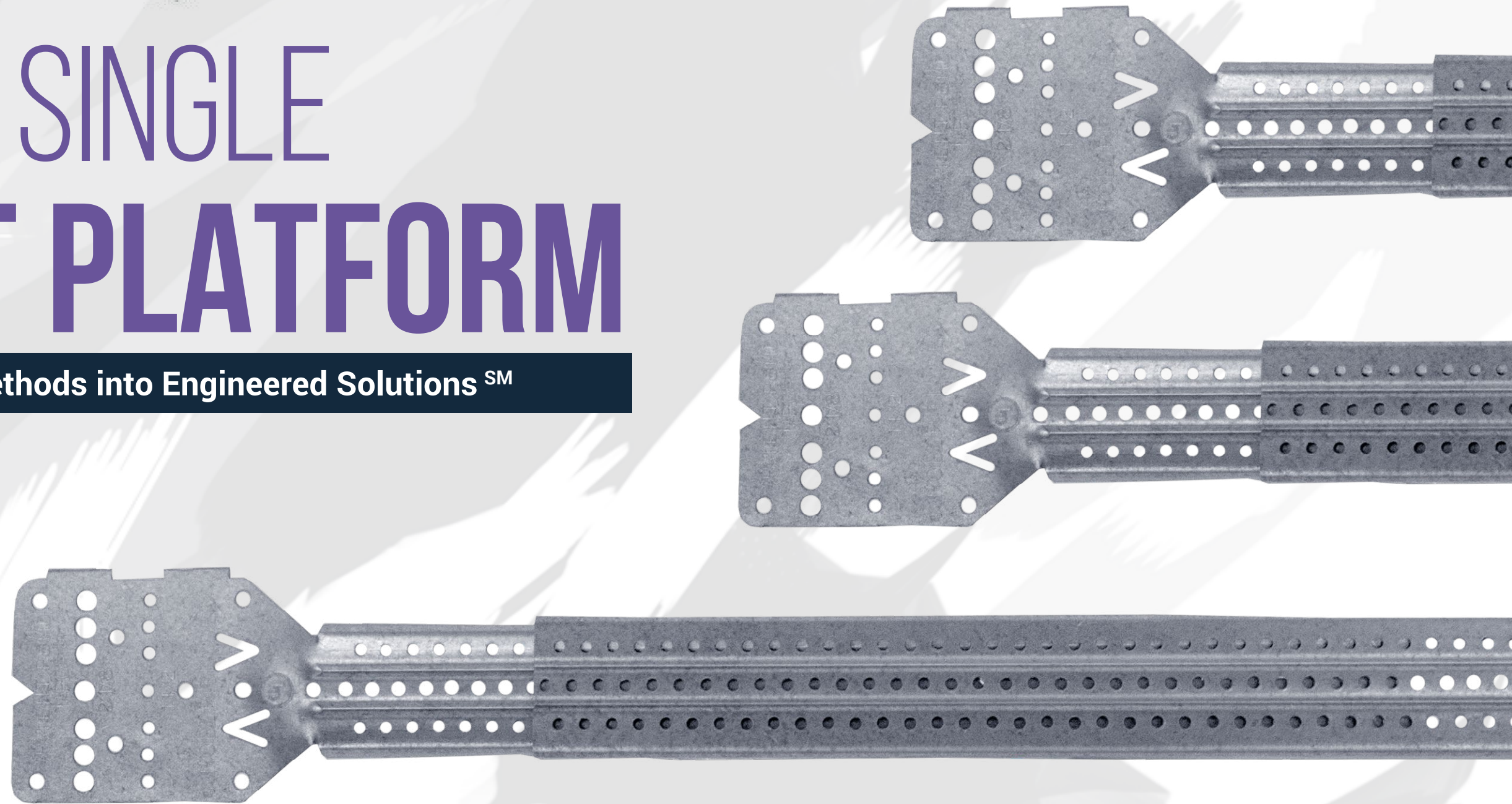




STOUT BRACKET®

THE SINGLE BRACKET PLATFORM

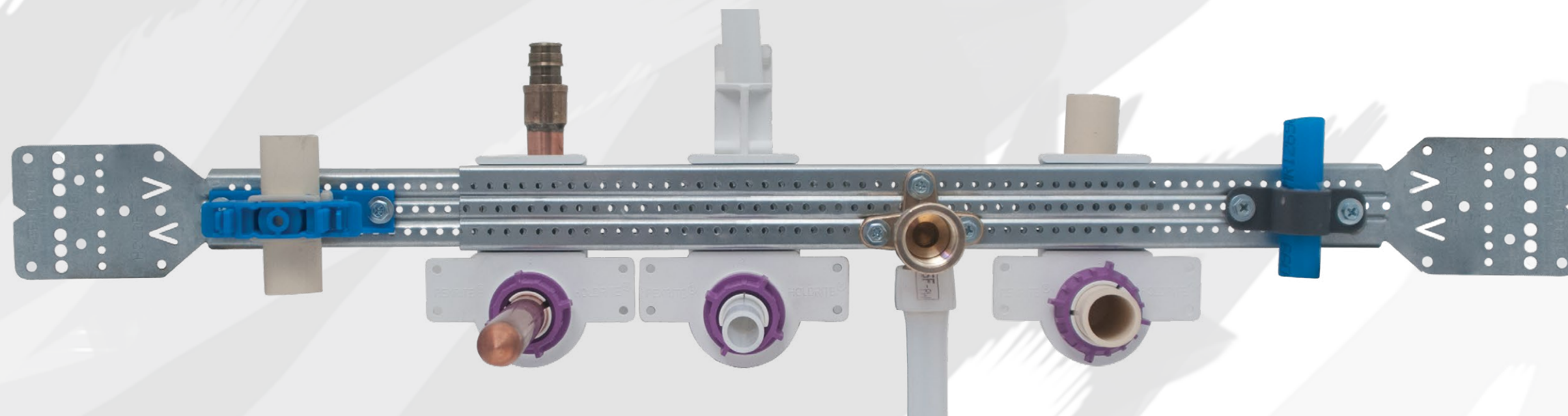
Converting Makeshift Methods into Engineered SolutionsSM



<http://holdrite.com/products/telescoping-supports/>






The last three decades have seen HOLDRITE® evolve from a single-product family business to an international corporation and acknowledged industry leader. Hundreds of millions of HOLDRITE® products have been installed into a wide variety of projects from single- and multi-family housing to hotel, government, military, healthcare, institutional and other market sectors.



The HOLDRITE Stout Bracket #SB3 and #SB4 platform provides **the engineered multi-purpose telescoping support for various construction projects.** HOLDRITE SB3/SB4 Stout Brackets provide the ideal “single bracket” standardization that sets the shop standard.

HOLDRITE®
CONVERTING MAKESHIFT METHODS INTO ENGINEERED SOLUTIONS™

www.holdrite.com | 1-800-321-0316
sales@holdrite.com   

<http://holdrite.com/products/telescoping-supports/>

HOLDRITE Stout Bracket® #SB3 and #SB4

- Multi-purpose galvanized telescoping bracket
- Ideal for toilet, sink/lavatory, shower, water heater, vertical mid-span applications and much more
- Telescoping design supports PEX, copper, CPVC and other items
- Integrates with HOLDRITE ProGuard® #731, #732 and #734
- UL Listed



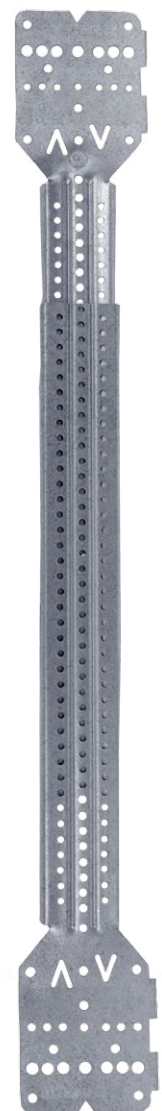
HOLDRITE
CONVERTING MAKESHIFT METHODS INTO ENGINEERED SOLUTIONS SM

www.holdrite.com | 1-800-321-0316
sales@holdrite.com

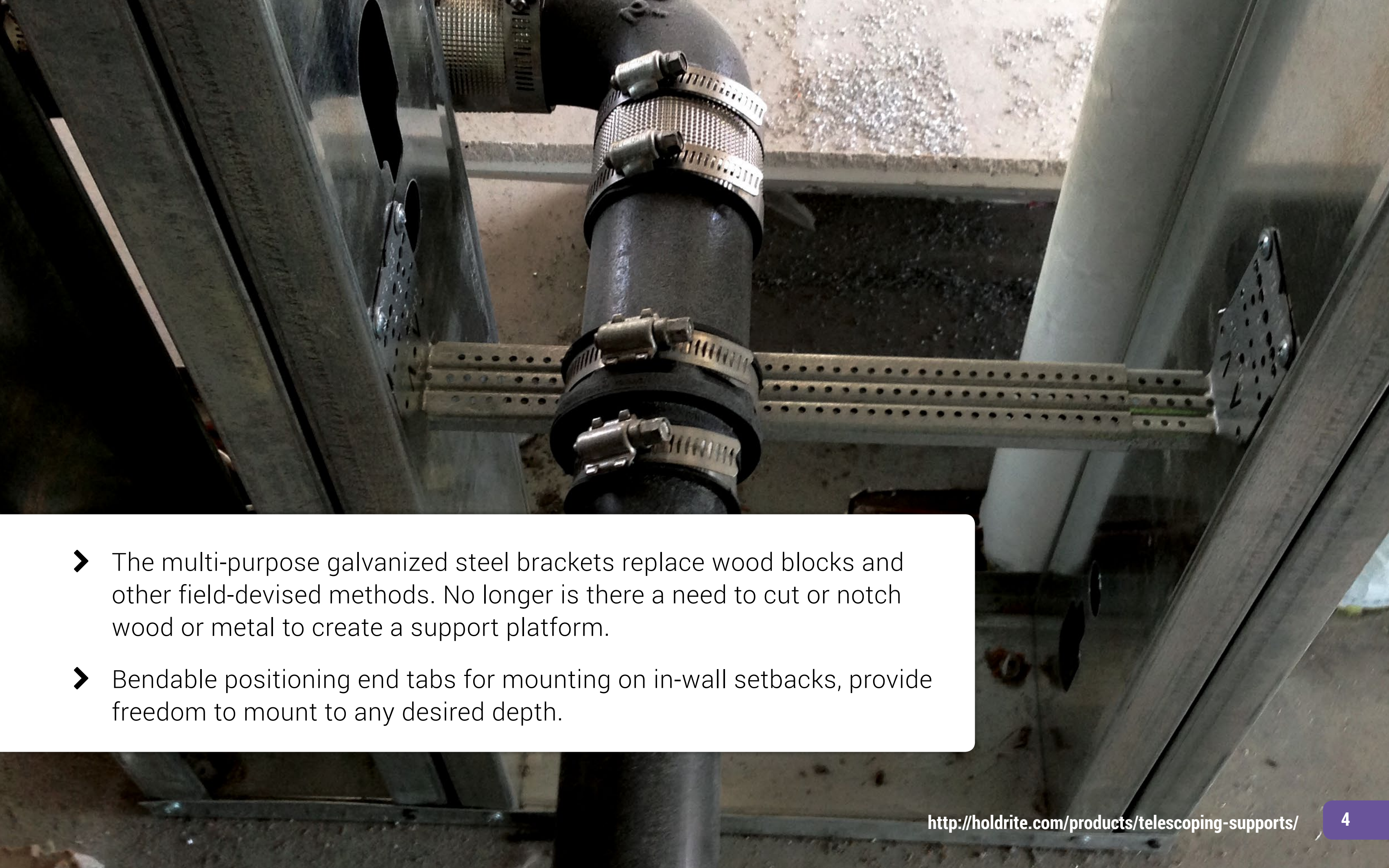


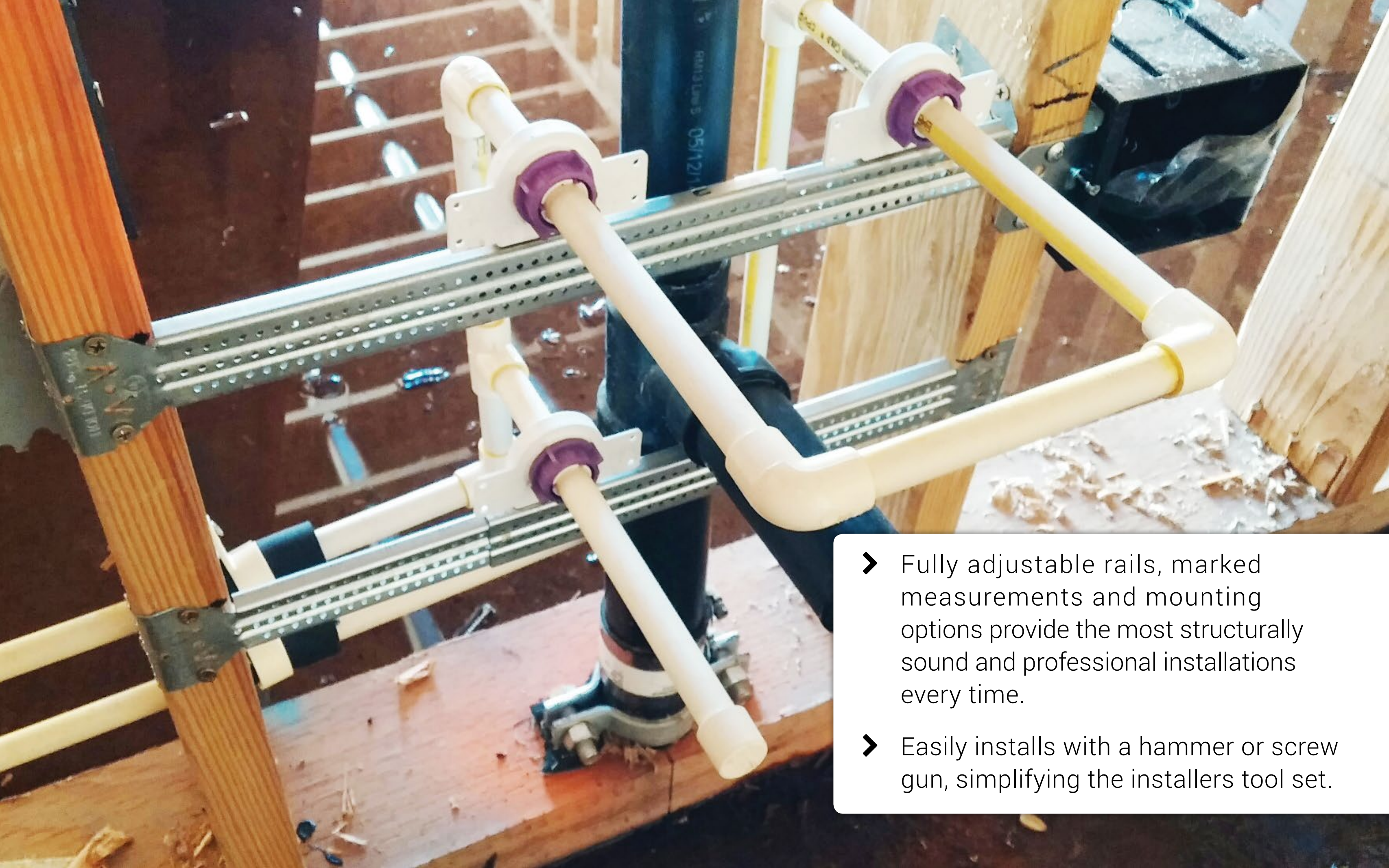
WHAT MAKES THESE MULTI-PURPOSE TELESCOPING SUPPORTS **THE** SINGLE BRACKET PLATFORM?

- The adjustable bracket is compatible with PEX, CPVC, PVC, ABS, cast iron, gas piping, stainless steel, or EMT. Whether mounted between wood or metal studs, between floor joists or roof trusts, they provide precision placement that is difficult to achieve with non-telescoping brackets.
- Numerous HOLDRITE components and other manufacturers' clamps integrate directly onto the brackets for optimal versatility, achieving perfect piping alignment for the most accurate install possible.
- Clamps and fittings can be mounted without solder or glue.

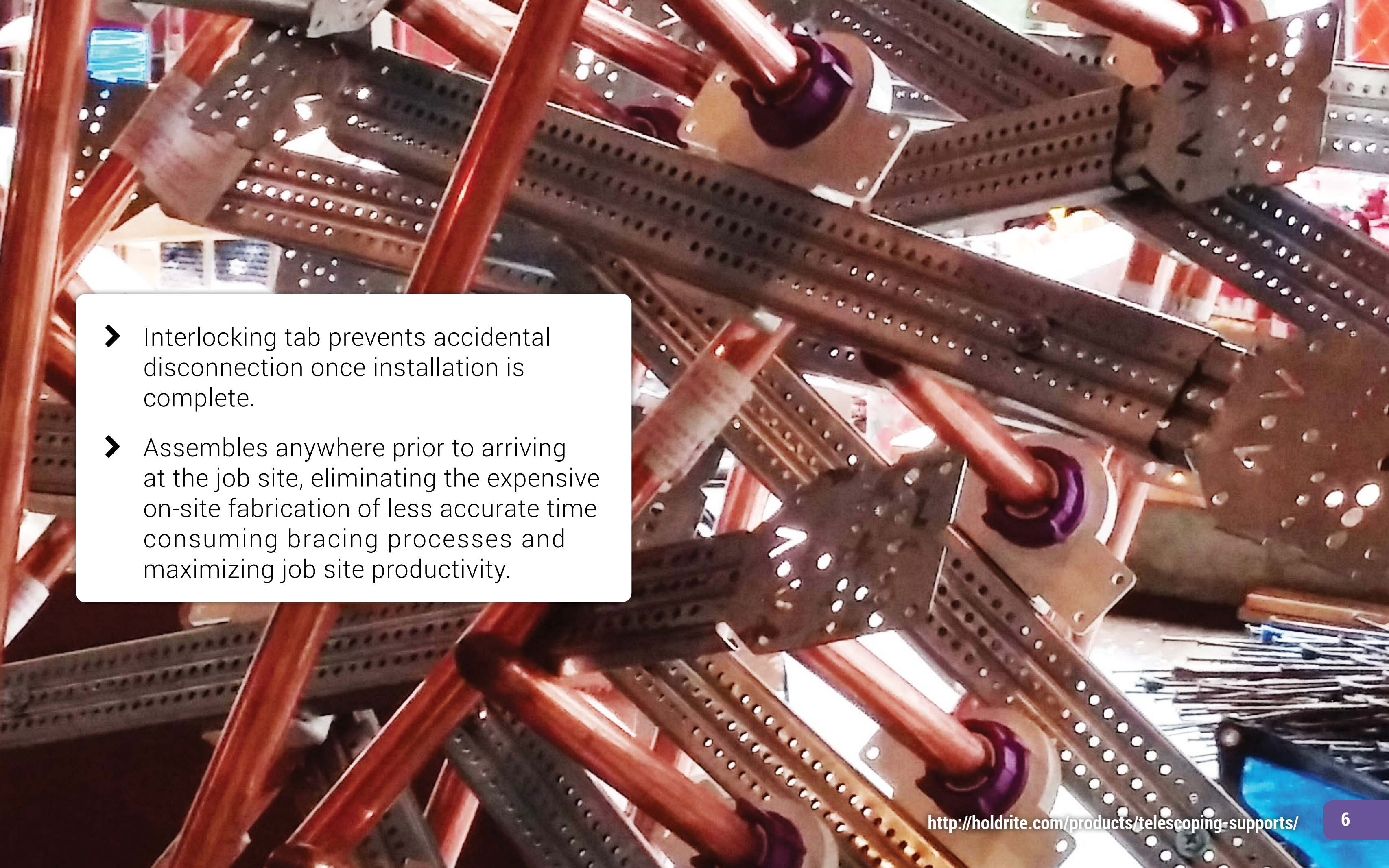


<http://holdrite.com/products/telescoping-supports/>

- 
- The multi-purpose galvanized steel brackets replace wood blocks and other field-devised methods. No longer is there a need to cut or notch wood or metal to create a support platform.
 - Bendable positioning end tabs for mounting on in-wall setbacks, provide freedom to mount to any desired depth.



- Fully adjustable rails, marked measurements and mounting options provide the most structurally sound and professional installations every time.
- Easily installs with a hammer or screw gun, simplifying the installers tool set.

- 
- Interlocking tab prevents accidental disconnection once installation is complete.
 - Assembles anywhere prior to arriving at the job site, eliminating the expensive on-site fabrication of less accurate time consuming bracing processes and maximizing job site productivity.



STOUTBRACKET®

Model #	Bracket Size	Pipe Size	Box Qty.
SB3	10¼" - 17½"	various	50
SB4	14½" - 24"	various	50





STOUTBRACKET®

Telescoping Pipe Support Solution
Shower Rough-In



Telescoping Pipe Support Solution
HOLDRITE® SB4 with #255

- See the HOLDRITE Stout Bracket in action used in a shower application.

MANUFACTURING IN THE USA

Since 1982, HOLDRITE has been designing and manufacturing products in the USA.



For more information about **HOLDRITE STOUT BRACKET®**, visit **www.HOLDRITE.com** to view installation videos, literature, and list price sheets, or contact HOLDRITE® customer support at 800-321-0316.

HOLDRITE® has been designing, manufacturing, and selling products to the North American Plumbing Industry for over thirty years.



HOLDRITE®

CONVERTING MAKESHIFT METHODS INTO ENGINEERED SOLUTIONSSM

www.holdrite.com | 1-800-321-0316

sales@holdrite.com

