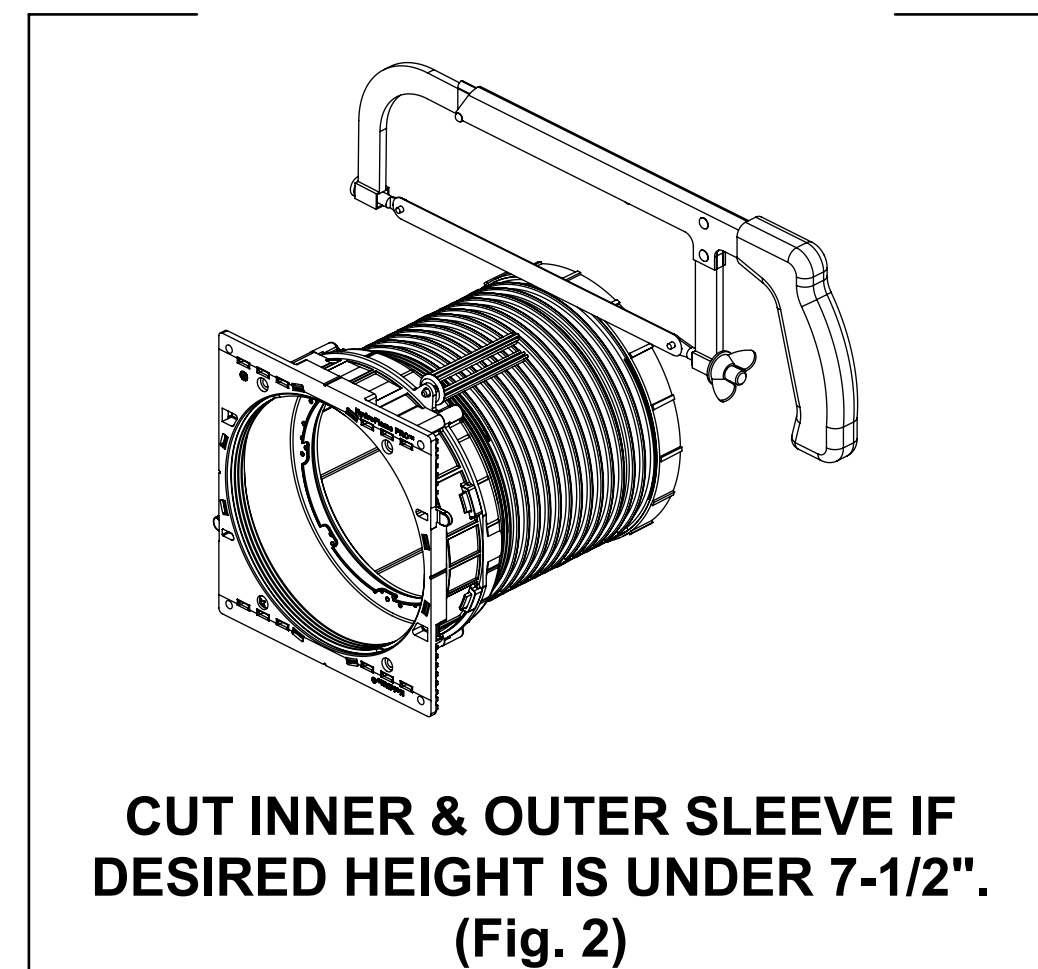
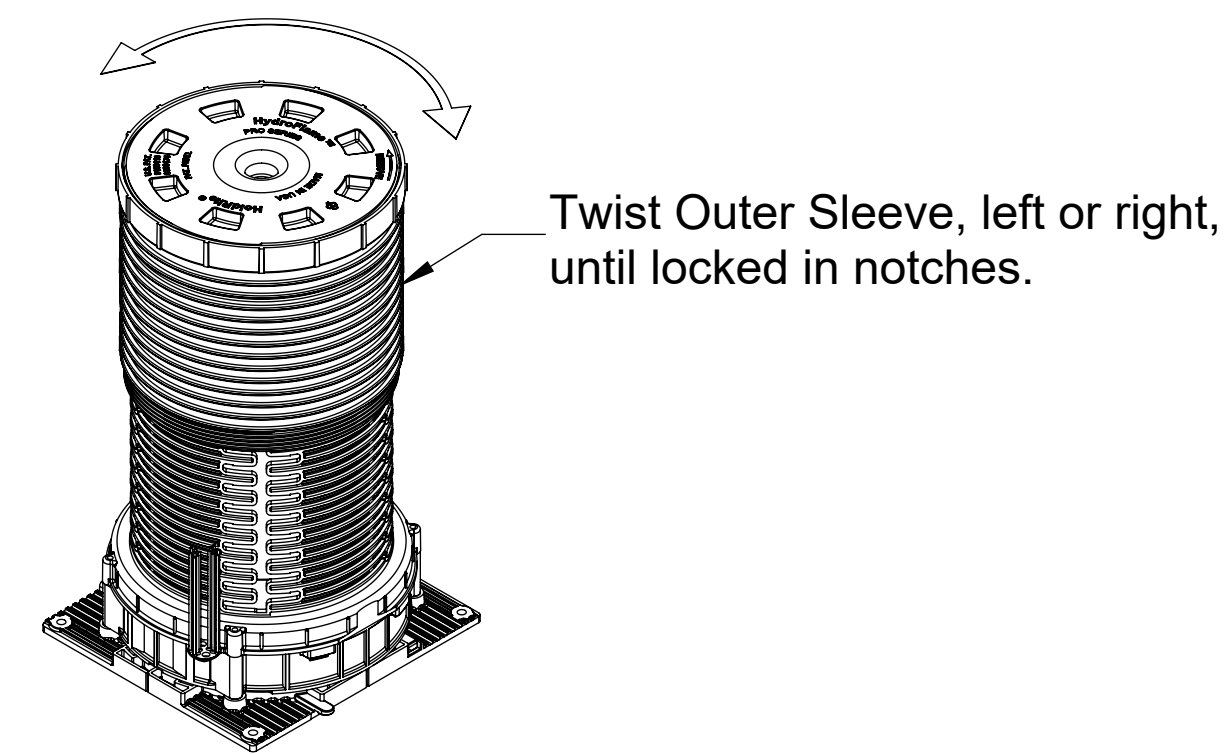


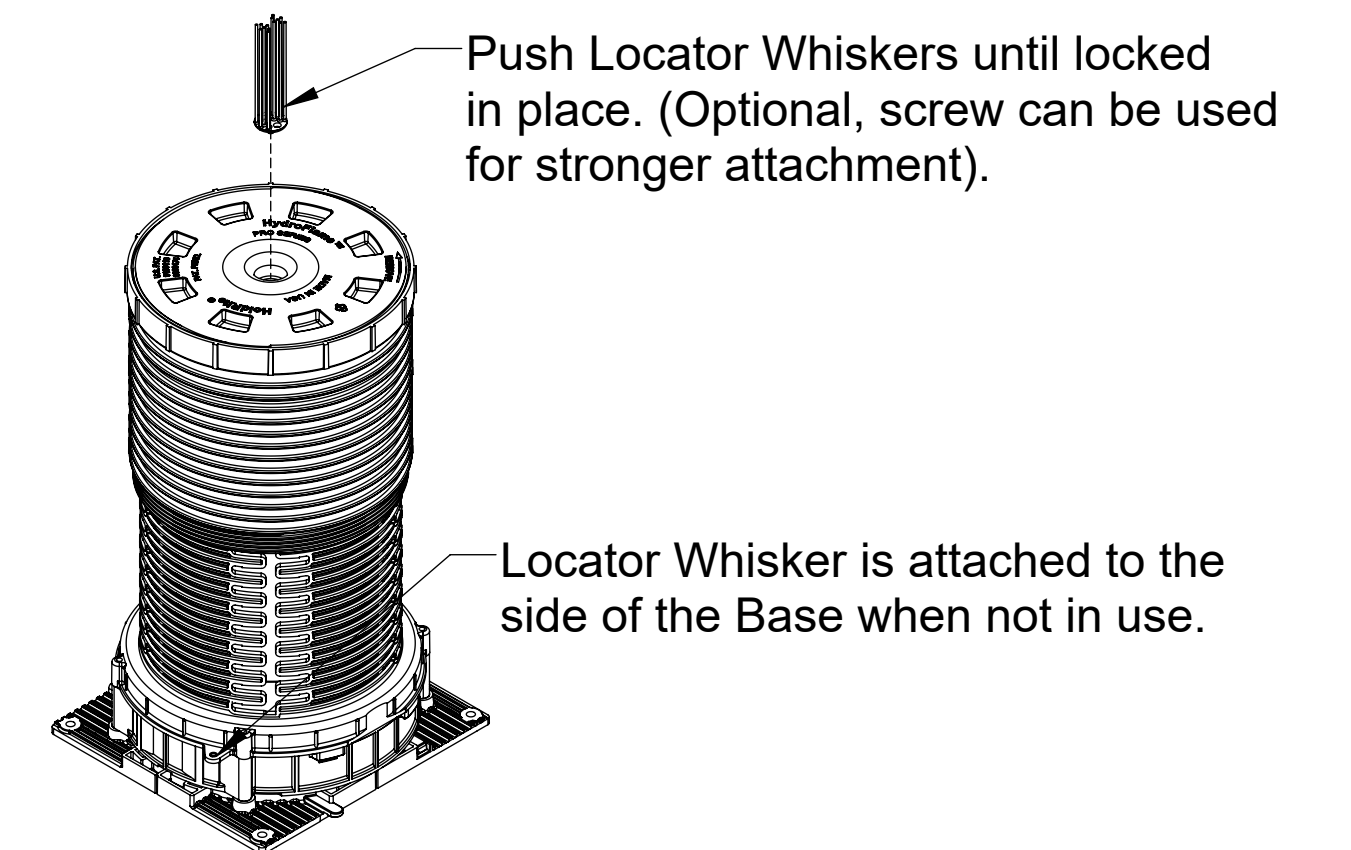
**ADJUST TO DESIRED HEIGHT.
(CAN BE CUT AS SHORT AS 2-1/2")
(Fig. 1)**



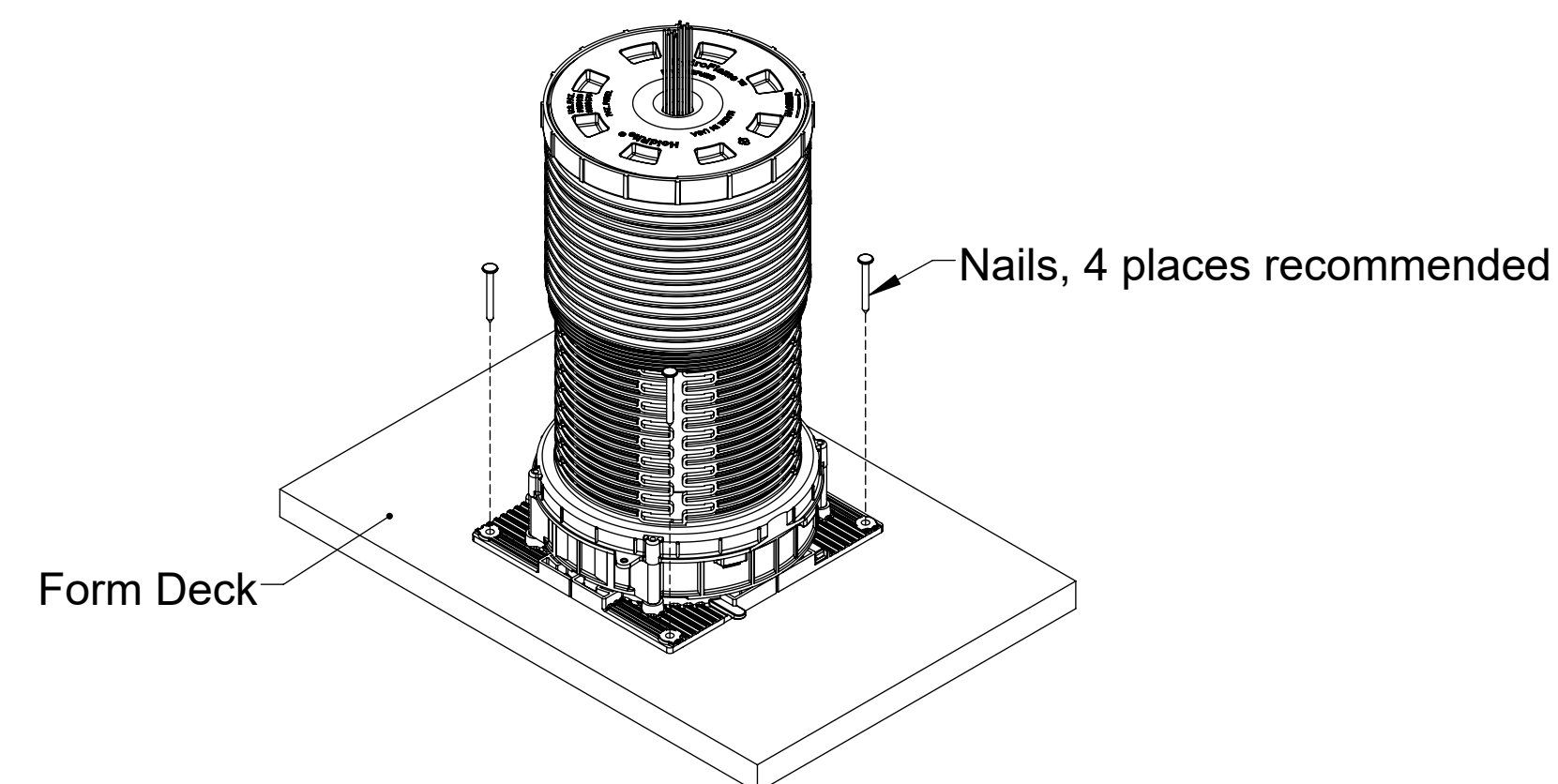
**CUT INNER & OUTER SLEEVE IF
DESIRED HEIGHT IS UNDER 7-1/2".
(Fig. 2)**



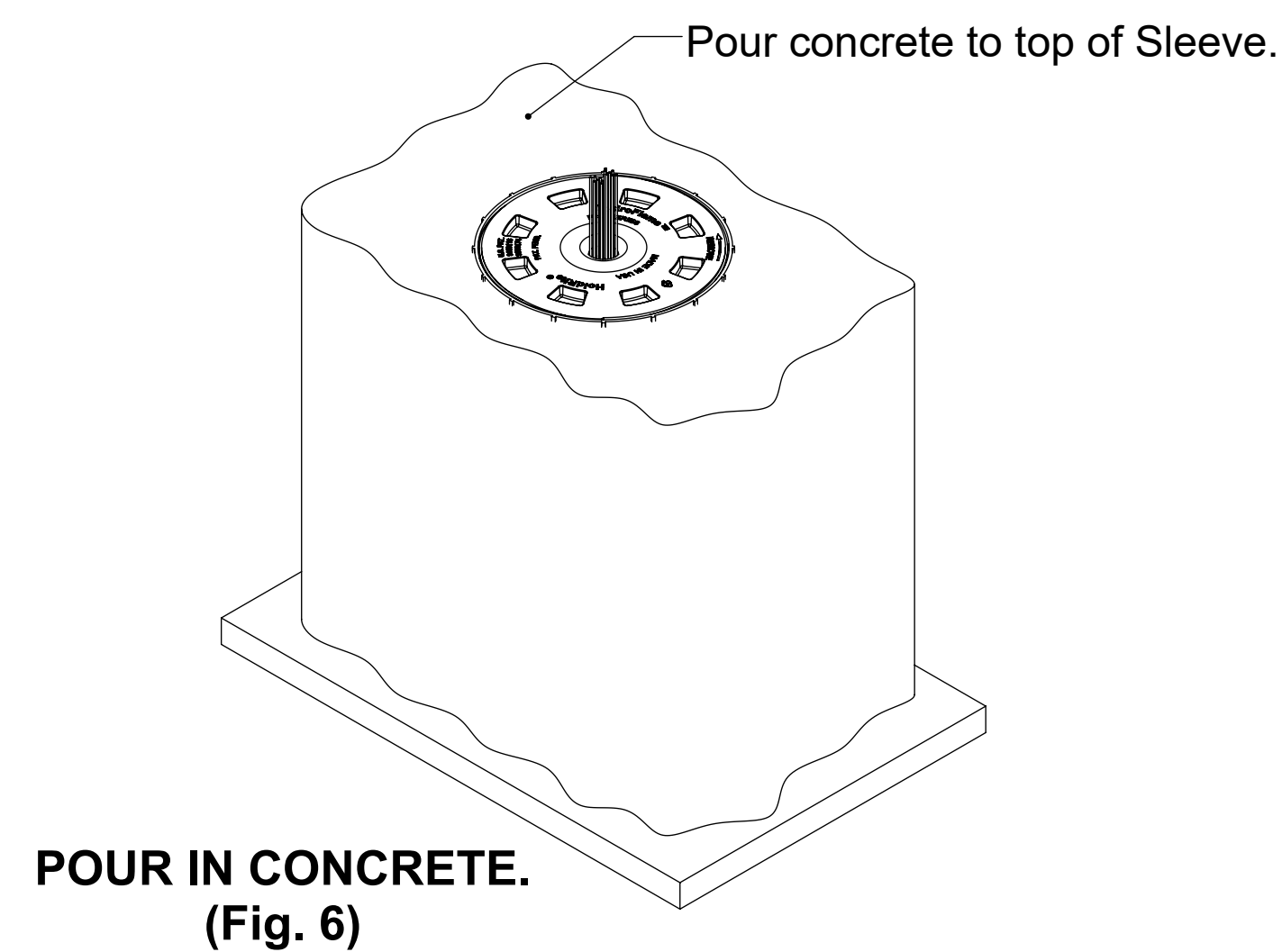
**LOCK OUTER SLEEVE IN PLACE.
(Fig. 3)**



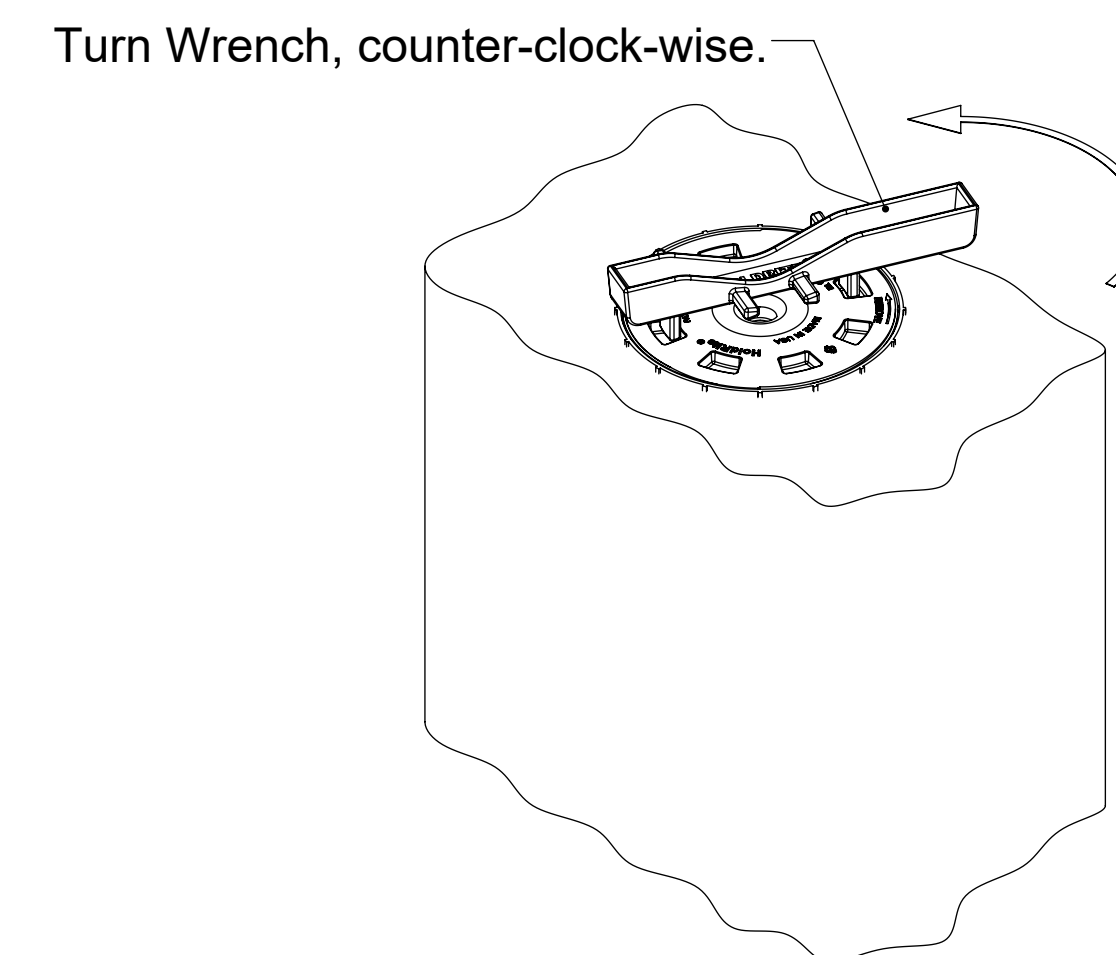
**INSERT WHISKERS.
(Fig. 4)**



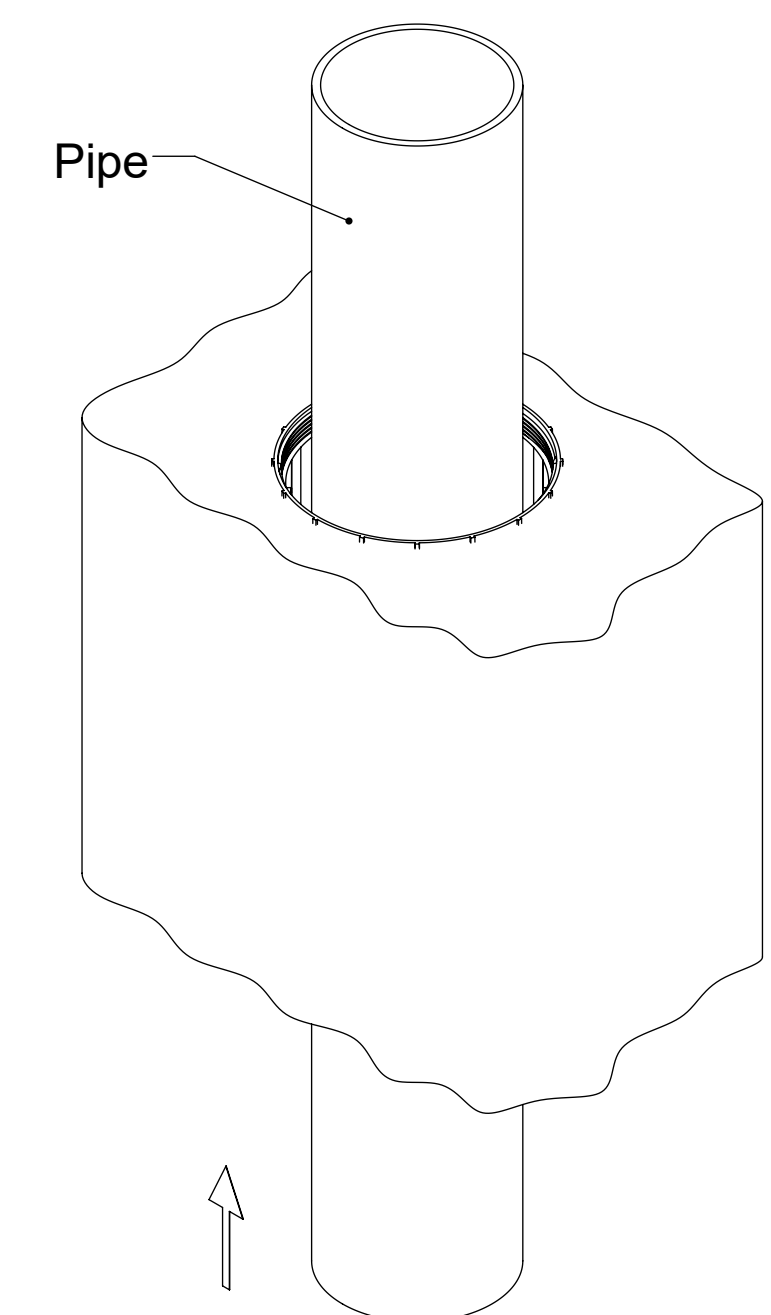
**NAIL TO FORM DECK.
(Fig. 5)**



**POUR IN CONCRETE.
(Fig. 6)**



**REMOVE CAP WITH HF WRENCH,
OR BREAK-OUT WITH HAMMER.
(Fig. 7)**



**INSTALL PIPE FROM BELOW.
SOAPY WATER EASES PIPE INSERTION.
(Fig. 8)**