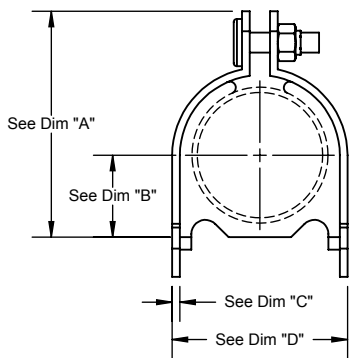
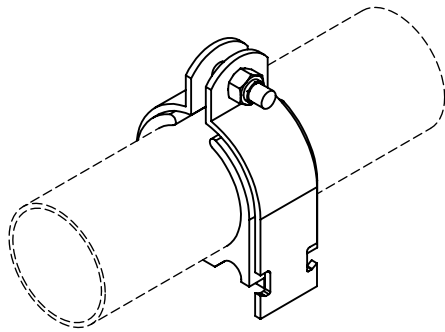


# PRODUCT SPECIFICATION DRAWING

## HOLDRITE® STRUT MOUNTED CUSHION CLAMP SERIES



**Chart 100 Series (tube)**

Standard	304 Stainless Steel	316 Stainless Steel	O.D.	Dim "A"	Dim "B"	Dim "C"	Dim "D"
HR100025	HR100025-4-555	HR100025-4-655	1/4"	1.11	.22	.075	.62
HR100037	HR100037-4-555	HR100037-4-655	3/8"	1.24	.28		.75
HR100050	HR100050-4-555	HR100050-4-655	1/2"	1.36	.34		.87
HR100062	HR100062-4-555	HR100062-4-655	5/8"	1.50	.41		1.00
HR100075	HR100075-4-555	HR100075-4-655	3/4"	1.78	.53		1.33
HR100087	HR100087-4-555	HR100087-4-655	7/8"	1.91	.58		1.45
HR100100	HR100100-4-555	HR100100-4-655	1.0"	2.03	.66	1.05	1.66
HR100112	HR100112-4-555	HR100112-4-655	1-1/8"	2.16	.72		1.79
HR100137	HR100137-4-555	HR100137-4-655	1-3/8"	2.75	.84	.119	2.22
HR100162	HR100162-4-555	HR100162-4-655	1-5/8"	3.03	.97		2.47
HR100212	HR100212-4-555	HR100212-4-655	2-1/8"	3.53	1.28		2.97
HR100262	HR100262-4-555	HR100262-4-655	2-5/8"	4.03	1.53		3.47
HR100312	HR100312-4-555	HR100312-4-655	3-1/8"	4.52	1.78		3.97
HR100412	HR100412-4-555	HR100412-4-655	4-1/8"	5.66	2.34		5.09
HR100612	HR100612-4-555	HR100612-4-655	6-1/8"	7.75	3.31		7.50

**Chart 200 Series (pipe)**

Standard	304 Stainless Steel	316 Stainless Steel	O.D.	Dim "A"	Dim "B"	Dim "C"	Dim "D"
HR200050	HR200050-4-555	HR200050-4-655	1/2"	1.91	.59	.075	1.45
HR200075	HR200075-4-555	HR200075-4-655	3/4"	2.16	.72	.105	1.79
HR200100	HR200100-4-555	HR200100-4-655	1.0"	2.87	.89	.119	2.22
HR200125	HR200125-4-555	HR200125-4-655	1-1/4"	3.03	1.03		2.47
HR200150	HR200150-4-555	HR200150-4-655	1-1/2"	3.28	1.16		
HR200200	HR200200-4-555	HR200200-4-655	2.0"	3.78	1.41		3.22
HR200300	HR200300-4-555	HR200300-4-655	3.0"	4.91	1.97		4.36
HR200400	HR200400-4-555	HR200400-4-655	4.0"	6.03	2.53		5.47
HR200600	HR200600-4-555	HR200600-4-655	6.0"	8.03	3.53		7.47

The HOLDRITE® Strut Mounted Cushion Clamps eliminate contact between piping, clamps and strut. The clamps allow piping to be added or removed from installations without disturbing adjacent lines. Compatible with copper, PEX and other materials.

### Product Information:

- Cushion material is a thermoplastic elastomer rated from -65° to +275°F.
- Clamps are 1008-1010 carbon steel, also available in 304 & 316 stainless steel.
- All metal components available in Tri-Valent (non-hex) plating or stainless steel.
- Nylon insert locknut.
- For use as a strut-mounted clamp in any orientation.
- Installation time is greatly reduced
- Dramatically improves finished appearance of insulated tube runs.
- Available in 1/4" - 6".



THIS INFORMATION IS PROPRIETARY TO HOLDRITE AND IS SUBJECT TO CHANGE WITHOUT NOTICE.  
IT MAY NOT BE REPRODUCED IN PART OR WHOLE WITHOUT WRITTEN AUTHORIZATION.



Product Submittal	
Job Name:	
Date:	
Part Number:	Qty:
Architect / Owner:	
Contractor:	
Notes:	