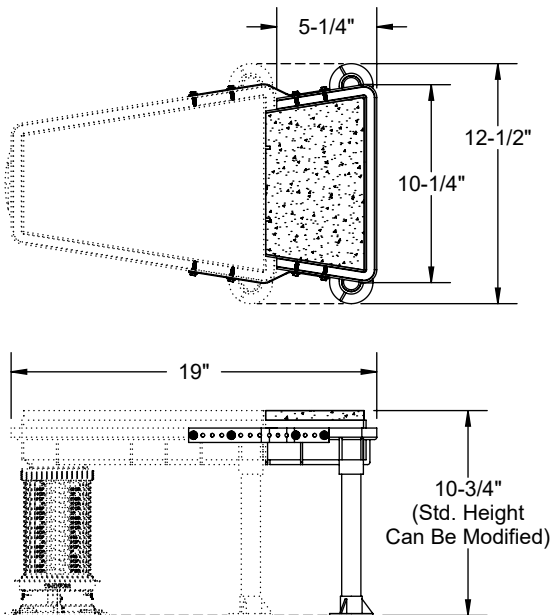
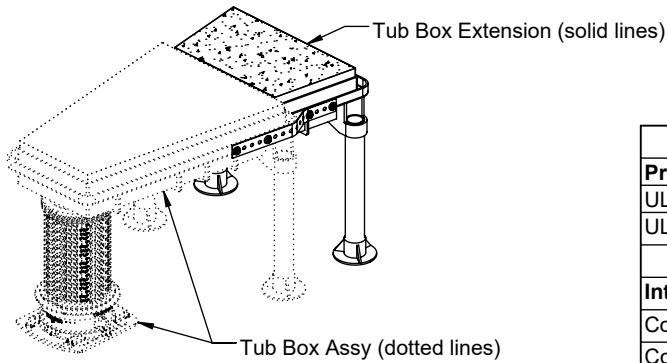


PRODUCT SPECIFICATION DRAWING

Hydroflame Pro Series - #HFPTB-EXT Tub Box Extension



Technical Data for HydroFlame Pro Firestop Device	
Product Test Criteria	
UL Fire Tested & Listed to UL 1479 (ASTM E814) & CAN/ULC S115	
UL Ratings (consult individual product specs & UL Systems):	
"L": Yes; "F": 3 Hrs. typical; "W": Yes (UL system may require caulk)	
Intumescent Fire Wrap Physical Properties, Performance	
Contains no solvents or carcinogenic fillers	
Color:	Gray/Black
Material shelf/store life:	Indefinite
Heat Expansion begins:	≈ 375°F (191°C)
Greatest Expansion:	575°F-1100°F (302°C - 593°C)
Constrained Expansion:	≥ 18 times volume
Free Expansion:	≥ 37 times volume
Expansion after accelerated weathering (tested to UL 1479):	
Temperature aging:	Pass - 270 days @ 158°F (70°C)
High humidity aging:	Pass - 180 days @ 97-100% humidity, 95°F (35°C)
Application Temperature:	Minimum 15°F (-9°C) / maximum 130°F (54°C)
Temperature Resistance:	Maximum 212°F (100°C)
Surface Burning Indicates (Per ASTM E84/UL 723):	
Flame spread:	5
Smoke developed:	5

The HOLDRITE® Hydroflame Pro Series #HFPTB-EXT is an extension kit for Hydroflame Tub Boxes (adding 5-1/4" to the length). Standard tub box assembled height is 10-3/4". Kit can be cut shorter, or sleeve extensions #HFPE2 can be added to make the tub box taller. This kit can be used with all Hydroflame Tub Boxes (both the PRO SERIES and the CUSTOM SERIES).

Product Information:

- Material:
 - Tub Box Body, Leg Feet, Box Adapter: ABS
 - Rear Legs: PVC
 - Box Inserts: Expanded Polystyrene or similar
 - Side Straps: 20GA, Galvanized, CRS
 - Hardware: #8, Self-drilling screws, 5/8" long
 - Sleeve: See material listed on Spec. Sheet for #HFP-P2 Sleeve.
- Patented & Patents Pending
- See Hydroflame Pro Series Installation Instructions, Best Practices documents and the latest UL Fire Resistive Directory file (R25101) for details.



INTERNATIONAL FIRESTOP COUNCIL
"The Source of Firestop Expertise"

THIS INFORMATION IS PROPRIETARY TO HOLDRITE AND IS SUBJECT TO CHANGE WITHOUT NOTICE. IT MAY NOT BE REPRODUCED IN PART OR WHOLE WITHOUT WRITTEN AUTHORIZATION.



HOLDRITE®
HYDROFLAME™
PRO SERIES

800-321-0316 OR 760-744-6944 / FAX: 760-744-0507 / WWW.HOLDRITE.COM
spec_HFP Series, Tub Box Extension, RevB, 12-04-19

Product Submittal	
Job Name:	
Date:	
Part Number:	Qty:
Architect / Owner:	
Contractor:	
Notes:	